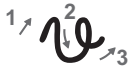


1



Handwriting practice area for the cursive letter 'e'. It consists of five columns of horizontal lines. The first column contains a dashed 'e' for tracing. The other four columns are empty, each starting with a red dot on the middle line to indicate the starting point for writing.

2



Handwriting practice area for the uppercase letter 'V'. It consists of five columns of horizontal lines. The first column contains a dashed 'V' for tracing. The other four columns are empty, each starting with a red dot on the middle line to indicate the starting point for writing.